

## Features

- RoHS compliant
- Wideband 10-4000MHz
- Balanced transmission line
- Good return loss
- RF power: 0.4W
- DC current: 30mA
- Operation temperature -40-85°C

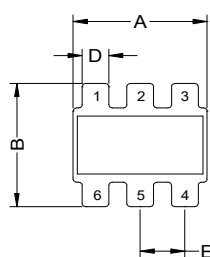
## Application

- Cellular
- Push-pull amplifiers

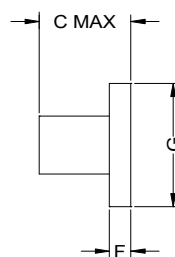


Mechanicals (Unit in mm, tolerance: +/-0.25 unless specify)

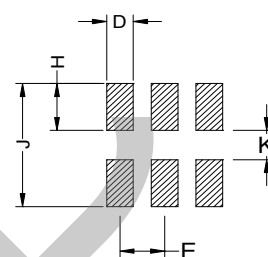
| A    | B    | C    | D    | E    | F    | G    | H    | J    | K    |
|------|------|------|------|------|------|------|------|------|------|
| 3.81 | 3.81 | 2.81 | 0.76 | 1.27 | 0.61 | 3.81 | 1.65 | 4.83 | 1.53 |



BOTTOM VIEW



SIDE VIEW



PCB Land Pattern

## Pin connections

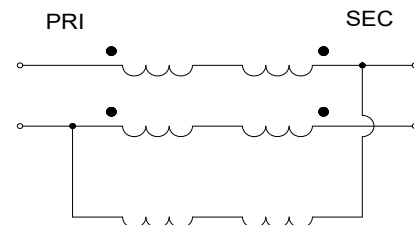
| Primary Dot | Primary | Secondary Dot | Secondary | GND | No use |
|-------------|---------|---------------|-----------|-----|--------|
| 3           | 1,2     | 6             | 4         | 1,2 | 5      |

## Transformer Electrical Specification

| Impedance Ratio<br>Secondary/Primary | Frequency<br>(MHz) | Insertion Loss* | Amplitude<br>Unbalance | Phase<br>Unbalance |
|--------------------------------------|--------------------|-----------------|------------------------|--------------------|
| 1                                    | 10-4000            | 3.0dB Max.      | 0.5dB Typ.             | 7 degree Typ.      |

\* Pin 1 and 2 must be connected together to meet schematics

## Schematics



## Typical Performance Data

Test condition: Input power @25°C

| Frequency<br>(MHz) | IL<br>(dB) | Input RL<br>(dB) | Amplitude<br>Unbalance<br>(dB) | Phase<br>Unbalance<br>(Deg.) |
|--------------------|------------|------------------|--------------------------------|------------------------------|
| 10                 | 1.09       | 18.38            | 0.04                           | 0.42                         |
| 100                | 1.02       | 20.93            | 0.03                           | 0.91                         |
| 500                | 1.04       | 19.48            | 0.12                           | 3.57                         |
| 1000               | 1.02       | 18.69            | 0.14                           | 5.58                         |
| 1500               | 1.01       | 18.63            | 0.07                           | 6.61                         |
| 2000               | 1.04       | 18.16            | 0.24                           | 6.88                         |
| 2500               | 1.11       | 17.10            | 0.48                           | 6.85                         |
| 3000               | 1.17       | 17.44            | 0.73                           | 5.21                         |
| 3500               | 1.33       | 17.30            | 0.82                           | 3.05                         |
| 4000               | 1.67       | 14.24            | 0.97                           | 1.66                         |

