

## Features

- RoHS compliant
- Wideband 5-1218MHz
- Input power: 500mW Max.
- DC current: 500mA Max.
- Operation temperature -40~105°C
- Impedance ratio:1:1

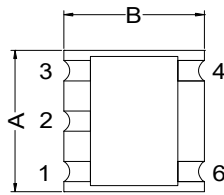


## Applications

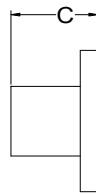
CATV, Broadband applications

Mechanicals (Unit in mm; tolerance: +/-0.25 unless specify):

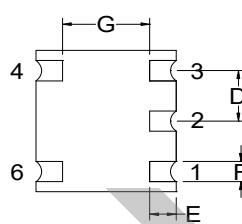
A	B	C	D	E	F	G	H	I	J	K
4.21	4.21	2.7Max.	1.27	1.11	0.9	2.0	1.4	0.76	1.27	4.83



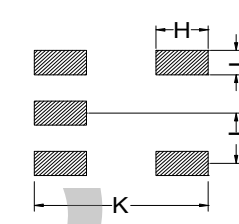
TOP VIEW



SIDE VIEW

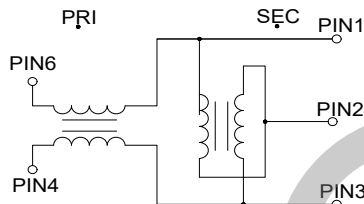


BOTTOM VIEW



PCB Land Pattern

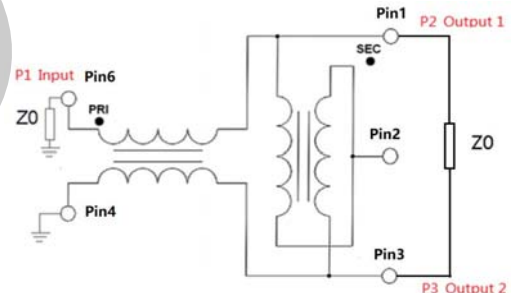
## Schematics



## Pin connections

1	Secondary Dot (output 1)
2	Secondary center tap (ground)
3	Secondary (output 2)
4	Primary (ground)
6	Primary Dot (input)

## Application & test circuit



Electrical Specifications: TA=25°C Zo=75Ω

Parameters	Test condition	Unit	Min.	Typ.	Max.
Frequency Range	-	MHz	5	-	1218
Port Impedance	-	Ω	-	75	-
Insertion Loss	5-1218MHz	dB	-	1	1.6
Input Return Loss	5-1218MHz	dB	16	22	-
Amplitude Balance	5-1000MHz	dB	-	0.7	±0.5
	1000-1218MHz		-	-	±0.7
Phase Balance (Nominal 180°)	5-1218MHz	Deg	-	2.5	±10



## Test curve

