

Features

- RoHS compliant
- Frequency Range 5-1218MHz
- 2 Way, 0 Degree
- RF power: 1W Max.
- Operation temperature -40-85°C

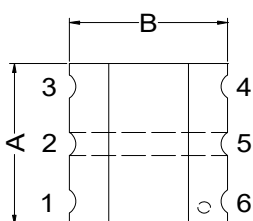
Applications

CATV applications

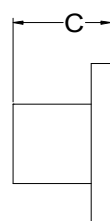


Mechanicals (Unit in mm; tolerance: +/-0.25 unless specify):

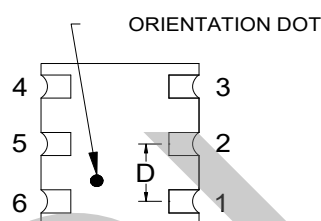
| A | B | C | D | E | F | G | H |
|------|------|------|------|------|------|------|------|
| 4.30 | 4.30 | 3.00 | 1.27 | 1.40 | 0.76 | 1.27 | 4.83 |



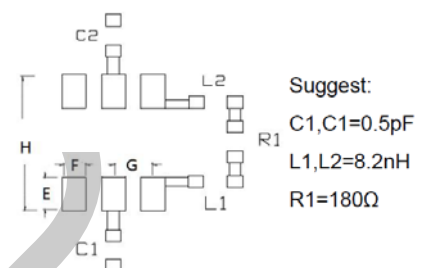
TOP VIEW



SIDE VIEW

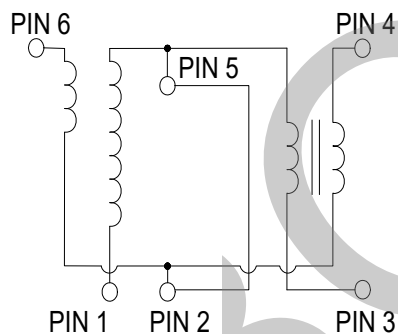


BOTTOM VIEW



PCB Land Pattern

Schematics



Pin connection

| | |
|-------|--------------------------|
| Pin 1 | Ground |
| Pin 2 | External 0.5pF Capacitor |
| Pin 3 | Output 1 |
| Pin 4 | Output 2 |
| Pin 5 | External 0.5pF Capacitor |
| Pin 6 | Input |

Electrical Specifications: TA=25°C, Zo=75Ω

| Parameters | Test condition | Unit | Min. | Typ. | Max. |
|--------------------|----------------|------|------|------|------|
| Power Split | - | dB | - | 3 | - |
| Frequency | - | MHz | 5 | - | 1218 |
| Insertion loss | 5-500MHz | dB | - | 0.4 | 0.6 |
| | 500-1000MHz | dB | - | 0.8 | 1.1 |
| | 1000-1218MHz | dB | - | 1.1 | 1.5 |
| Input return loss | 5-500MHz | dB | 20 | 28.0 | - |
| | 500-1000MHz | dB | 14 | 24.0 | - |
| | 1000-1218MHz | dB | 11 | 23.0 | - |
| Output return loss | 5-500MHz | dB | 17 | 28.0 | - |
| | 500-1000MHz | dB | 13 | 25.0 | - |
| | 1000-1218MHz | dB | 9 | 21.0 | - |
| Isolation | 5-500MHz | dB | 24 | 31.0 | - |
| | 500-1000MHz | dB | 30 | 32.0 | - |
| | 1000-1218MHz | dB | 26 | 31.0 | - |
| Amplitude Balance | 5-500MHz | dB | - | 0.1 | ±0.4 |
| | 500-1000MHz | dB | - | 0.3 | ±0.5 |
| | 1000-1218MHz | dB | - | 0.4 | ±0.7 |
| Phase Balance | 5-500MHz | Deg | - | 0.6 | ±2.0 |
| | 500-1000MHz | Deg | - | 0.7 | ±3.0 |
| | 1000-1218MHz | Deg | - | 1.0 | ±4.0 |



Test curve

