

Features

- RoHS compliant
- Frequency range: 5-2150MHz
- 2 Way, 0 Degree
- RF power: 1W Max.
- Operation temperature -40~85°C

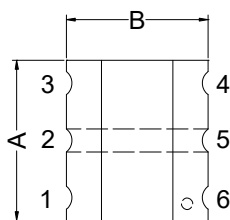
Applications

CATV applications.

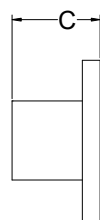


Mechanicals (Unit in mm; tolerance: +/-0.25 unless specify):

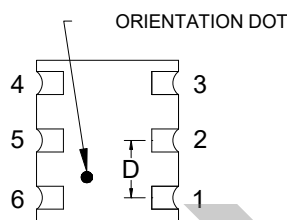
A	B	C	D	E	F	G	H
4.30	4.30	3.00	1.27	1.40	0.76	1.27	4.83



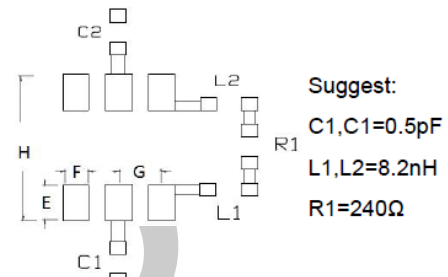
TOP VIEW



SIDE VIEW

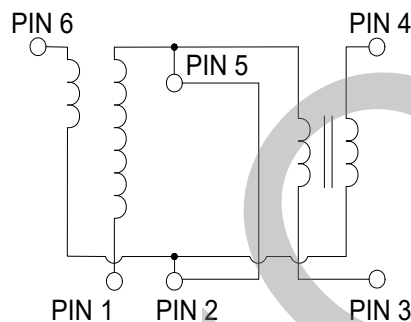


BOTTOM VIEW



PCB Land Pattern

Schematics



Pin connection

Pin 1	Ground
Pin 2	External 0.5pF Capacitor
Pin 3	Output 2
Pin 4	Output 1
Pin 5	External 0.5pF Capacitor
Pin 6	Input

Electrical Specifications: TA=25°C, Zo=75Ω

Parameters	Test condition	Unit	Min.	Typ.	Max.
Power Split	-	dB	-	3	-
Frequency	-	MHz	5	-	2150
Insertion Loss (PIN6-PIN4)	5-1002MHz	dB	-	0.3	0.7
	1003-1218MHz	dB	-	0.5	1.0
	1218-1600MHz	dB	-	0.6	1.2
	1600-2150MHz	dB	-	1.0	2.0
Insertion Loss (PIN6-PIN3)	5-1002MHz	dB	-	0.6	1.0
	1003-1218MHz	dB	-	0.8	1.2
	1218-1600MHz	dB	-	1.1	1.6
	1600-2150MHz	dB	-	2.3	3.2
Isolation	5-10MHz	dB	24	30	-
	10-65MHz	dB	30	42	-
	66-870MHz	dB	26	34	-
	871-1002MHz	dB	24	31	-
	1003-1600MHz	dB	22	31	-
Amplitude Balance	5-1002MHz	dB	-	0.3	0.5
	1003-1218MHz	dB	-	0.3	0.5
	1218-1600MHz	dB	-	0.3	0.5
	1600-2150MHz	dB	-	0.8	1.5
Phase Balance	5-1002MHz	Deg	-	0.8	4.0
	1003-1600MHz	Deg	-	1.0	6.0
	1600-2150MHz	Deg	-	1.2	7.0
Input Return Loss	5-1002MHz	dB	20	39	-
	1003-1600MHz	dB	14	22	-
	1600-2150MHz	dB	11	18	-
Output Return Loss (PIN4)	5-1002MHz	dB	17	28	-
	1003-1600MHz	dB	13	18	-
	1600-2150MHz	dB	9	14	-
Output Return Loss (PIN3)	5-1002MHz	dB	20	40	-
	1003-1600MHz	dB	15	22	-
	1600-2150MHz	dB	12	18	-



Test curve

