

Features

- RoHS compliant
- Wideband: 5-1000MHz
- RF power: 0.25W Max.
- DC current: 30mA Max.
- Operation temperature: -40~85°C

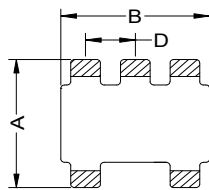
Applications

CATV broadband applications

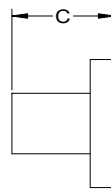


Mechanicals (Unit in mm; tolerance: +/-0.25 unless specify):

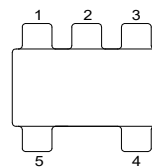
A	B	C	D	E	F	G	H	I
3.81	3.81	3.81Max.	1.27	4.83	3.30	1.40	0.76	1.27



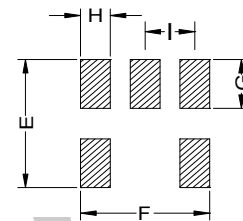
BOTTOM VIEW



SIDE VIEW

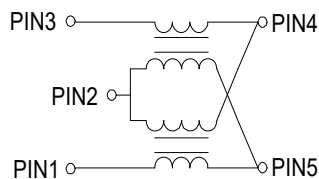


TOP VIEW



PCB Land Pattern

Schematics



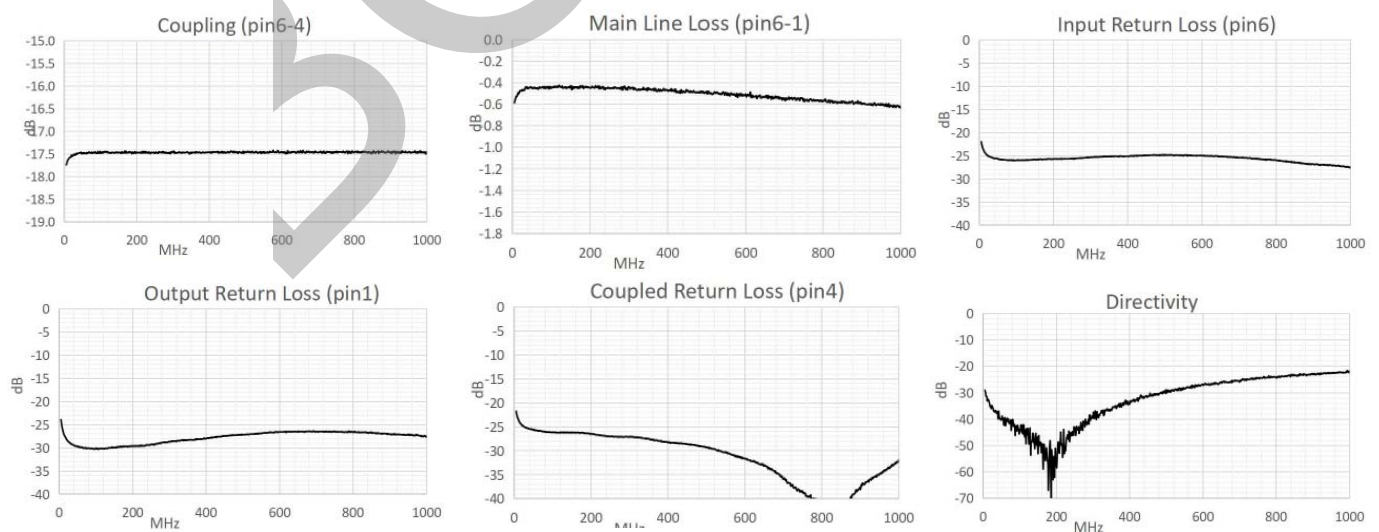
Pin connections

1	Coupled
2	Ground
3	input
4	Output
5	External 75 Ω

Electrical Specifications: TA=25°C Zo=75Ω

Parameters	Test condition	Unit	Min.	Typ.	Max.
Coupling	5-1000MHz	dB	16.8	17.3	17.8
Main Line Loss	5-50MHz	dB	-	0.6	0.9
	50-500MHz	dB	-	0.5	0.9
	500-1000MHz		-	0.6	1.6
Directivity	5-50MHz	dB	25	30	-
	50-500MHz		7	28	-
	500-1000MHz		3	21	-
Input Return Loss	5-1000MHz	dB	20	28	-
Output Return Loss	5-1000MHz	dB	18	29	-
Coupled Return Loss	5-1000MHz	dB	20	27	-

Test curve



Huizhou Boody Technology Co., Ltd
[Http://www.boody.com.cn](http://www.boody.com.cn)

Tel: +86-752-2831031
 Fax: +86-752-2831030
 E-mail: sales-hz@boody.com.cn

ISO9001/14001 Certified
 UL insulation systems: E358019