

Features

- Wideband 5-85MHz
- Good return loss
- RF power 0.25W
- Operation temperature -20-85°C

Application

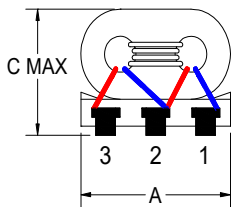
- Impedance matching
- push-pull amplifiers



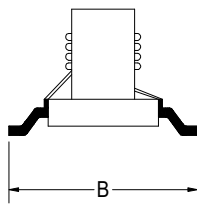
Mechanicals (Unit in mm, tolerance: +/-0.25 unless specify)

| A | B | C | D | E | F | G | H | J | K |
|------|------|------|------|------|------|------|------|------|------|
| 3.80 | 4.80 | 3.50 | 0.50 | 1.27 | 2.80 | 2.60 | 1.30 | 4.40 | 1.00 |

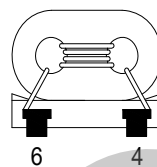
■ R ■ B
 G



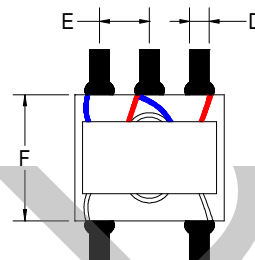
FRONT VIEW



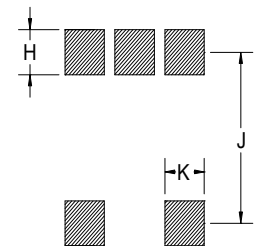
SIDE VIEW



REAR VIEW

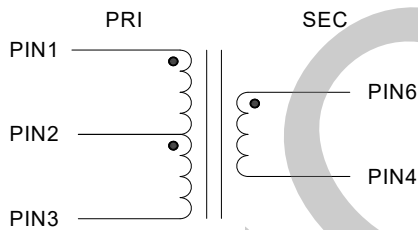


TOP VIEW



PCB Land Pattern

Schematics



Transformer Electrical Specification

| Ratio Secondary/Primary | Frequency (MHz) | Insertion Loss | Return Loss |
|----------------------------|--------------------|----------------|-------------|
| 9 | 5-85 | 1.0dB Max. | 12.0dB Min. |

